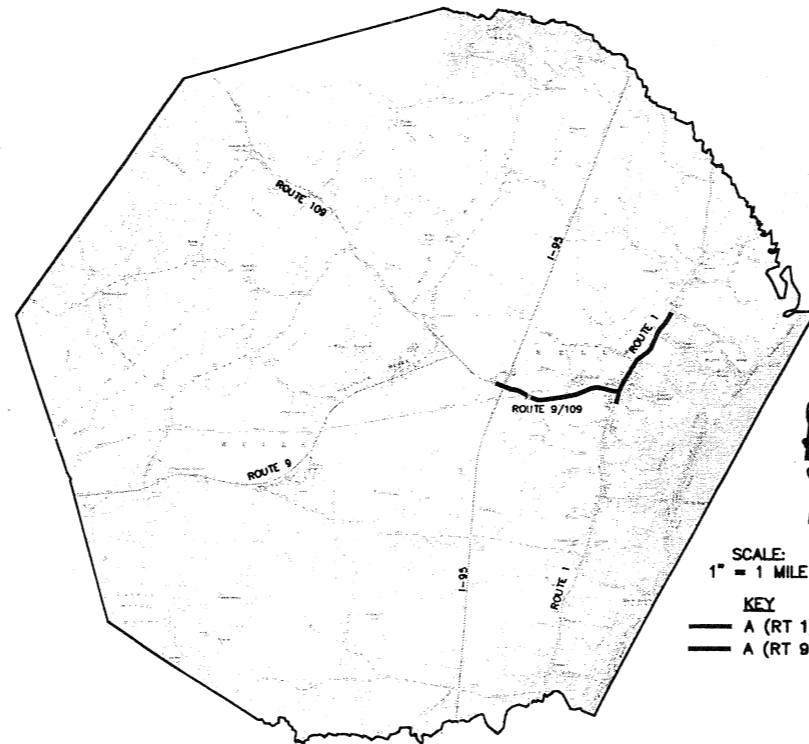
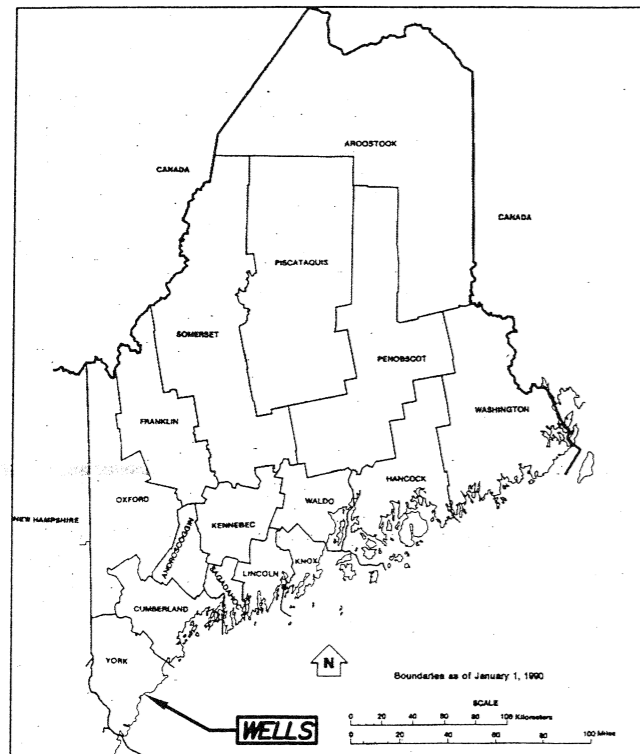


TOWN OF WELLS, MAINE
COMPREHENSIVE PLAN

SIDEWALK DEVELOPMENT PLAN

APPENDICES 7.1 AND 7.2



SCALE:
1" = 1 MILE

KEY
 — A (RT 1)
 — A (RT 9/109)

- NOTES:
1. SEE ENGINEERING PLAN FOR PROPOSED SIDEWALK LAYOUT.
 2. SEE SIDEWALK DEVELOPMENT PLAN FOR DETAILS.

NO.	DATE	REVISION	DESIGNED:	CHECKED:	APPROVED:
			VP		
			DRAWN:		
			AWP		

CEP
CONSULTING ENGINEERS Inc.

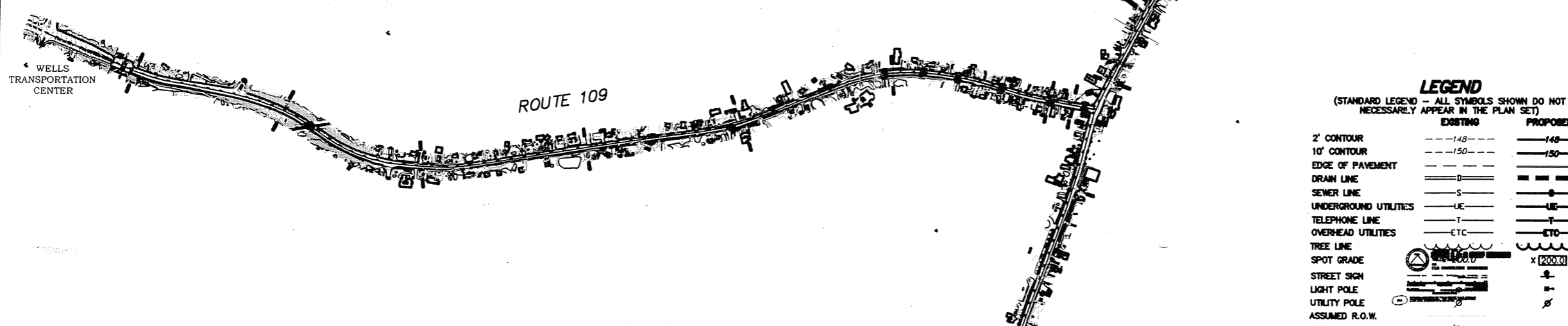
Park Place Corporate Center
316 US Route 1, Suite D, York, ME 03909
Tel: (207) 461-2184
ed@cepengineers.com
www.cepengineers.com
Maine • New Hampshire • Vermont

CLIENT:
**208 SAINFORD ROAD
WELLS, MAINE 04080**

**SIDEWALK DEVELOPMENT PLAN
ROUTE 1/ROUTE 109
WELLS, ME
COVER**

SCALE: NONE	JOB NO. 07-0804
DATE: JAN. 2003	DWG.

RECEIVED JAN 24 2003



WELLS
TRANSPORTATION
CENTER

ROUTE 109

US ROUTE 1

DRAKES
ISLAND

AREA "A" & "B"

LEGEND
(STANDARD LEGEND - ALL SYMBOLS SHOWN DO NOT NECESSARILY APPEAR IN THE PLAN SET)

	EXISTING	PROPOSED
2' CONTOUR	---148---	---148---
10' CONTOUR	---150---	---150---
EDGE OF PAVEMENT	=====	=====
DRAIN LINE	—D—	—D—
SEWER LINE	—S—	—S—
UNDERGROUND UTILITIES	—UC—	—UC—
TELEPHONE LINE	—T—	—T—
OVERHEAD UTILITIES	—ETC—	—ETC—
TREE LINE		
SPOT GRADE		
STREET SIGN		
LIGHT POLE		
UTILITY POLE		
ASSUMED R.O.W.		
GUY POLE		
IRON PIN, DRILL HOLE		
TREE		

NO.	DATE	REVISION	CHECKED:	APPROVED:
			JRW/ACL	WAG

CEP
CONSULTING ENGINEERS

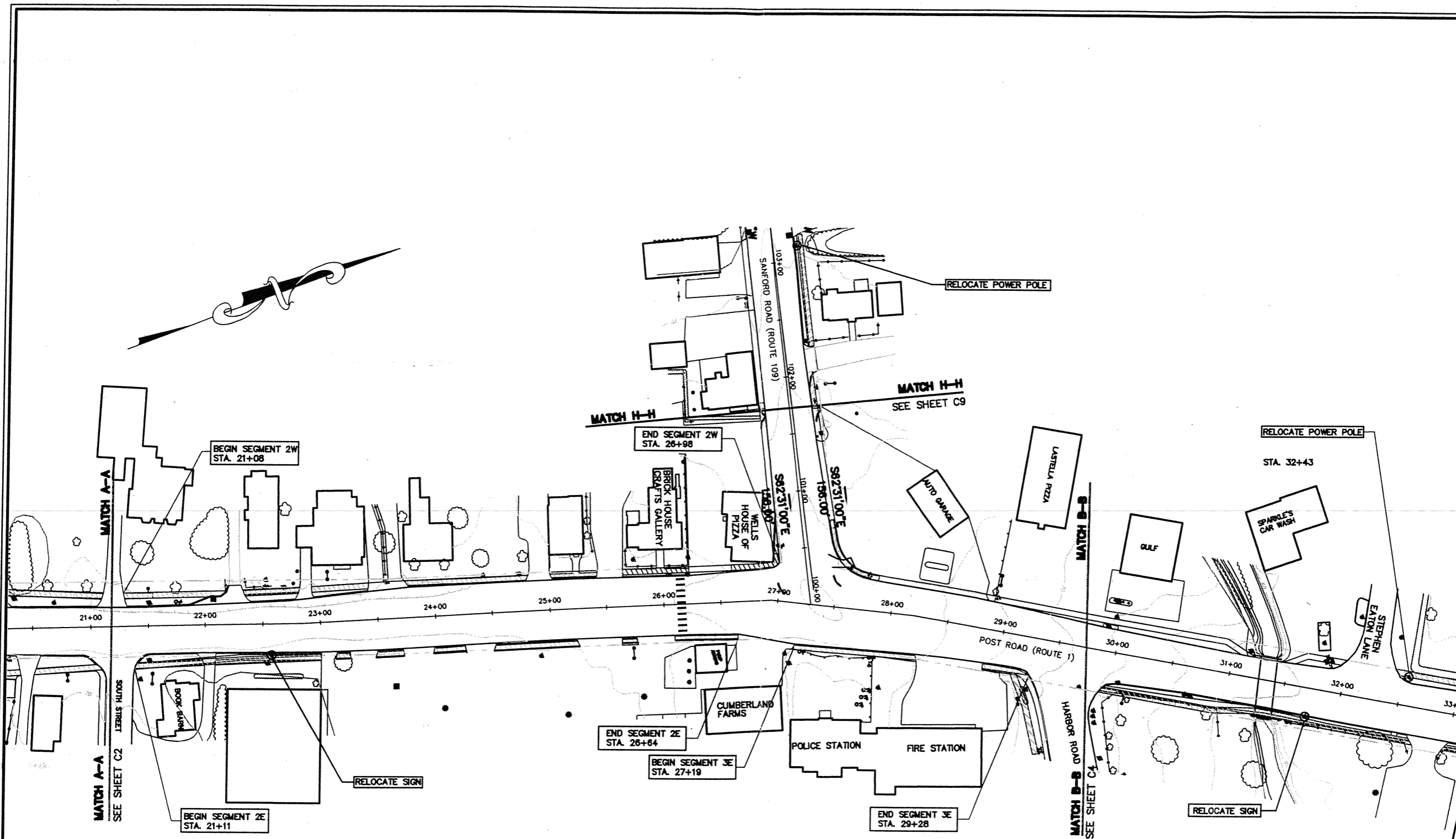
316 US Route 1, Suite D, York, ME 03909
Tel: 207-363-2384
Fax: 207-363-2384
www.cep-engineers.com
Maine • New Hampshire • Vermont

TOWN OF WELLS
208 SANFORD ROAD
WELLS, MAINE 04090

GENERAL INFORMATION

SIDEWALK DEVELOPMENT PLAN
ROUTE 1 / ROUTE 109
WELLS, ME

SCALE: 1"=100'	JOB NO. 01-22840
DATE: JAN 2003	DWG. 01



GENERAL NOTES:
 1. SEE GENERAL NOTES SHEET C1. ALL NOTES APPLY TO PROJECT SEGMENTS.
 2. R.O.W. SHOWN IS BASED UPON BEST AVAILABLE INFORMATION. FINAL DESIGN REQUIRES VERIFICATION

SEGMENT 2W NOTES
 1. REMOVE AND REPLACE EXISTING BITUMINOUS SIDEWALK FROM STA. 21+08 TO STA. 28+98
 2. REMOVE AND REPLACE EXISTING BITUMINOUS CURB FROM STA. 21+08 TO STA. 28+98 WITH VERTICAL GRANITE CURB

SEGMENT 2E NOTES
 1. REMOVE AND REPLACE EXISTING BITUMINOUS SIDEWALK FROM STA. 12+75 TO STA. 21+10
 2. REMOVE AND REPLACE EXISTING BITUMINOUS CURB FROM STA. 12+75 TO STA. 21+10 WITH VERTICAL GRANITE CURB

SEGMENT 3E NOTES
 1. PROJECT APPROVED BY THE TOWN. TO BE CONSTRUCTED FALL 2002.

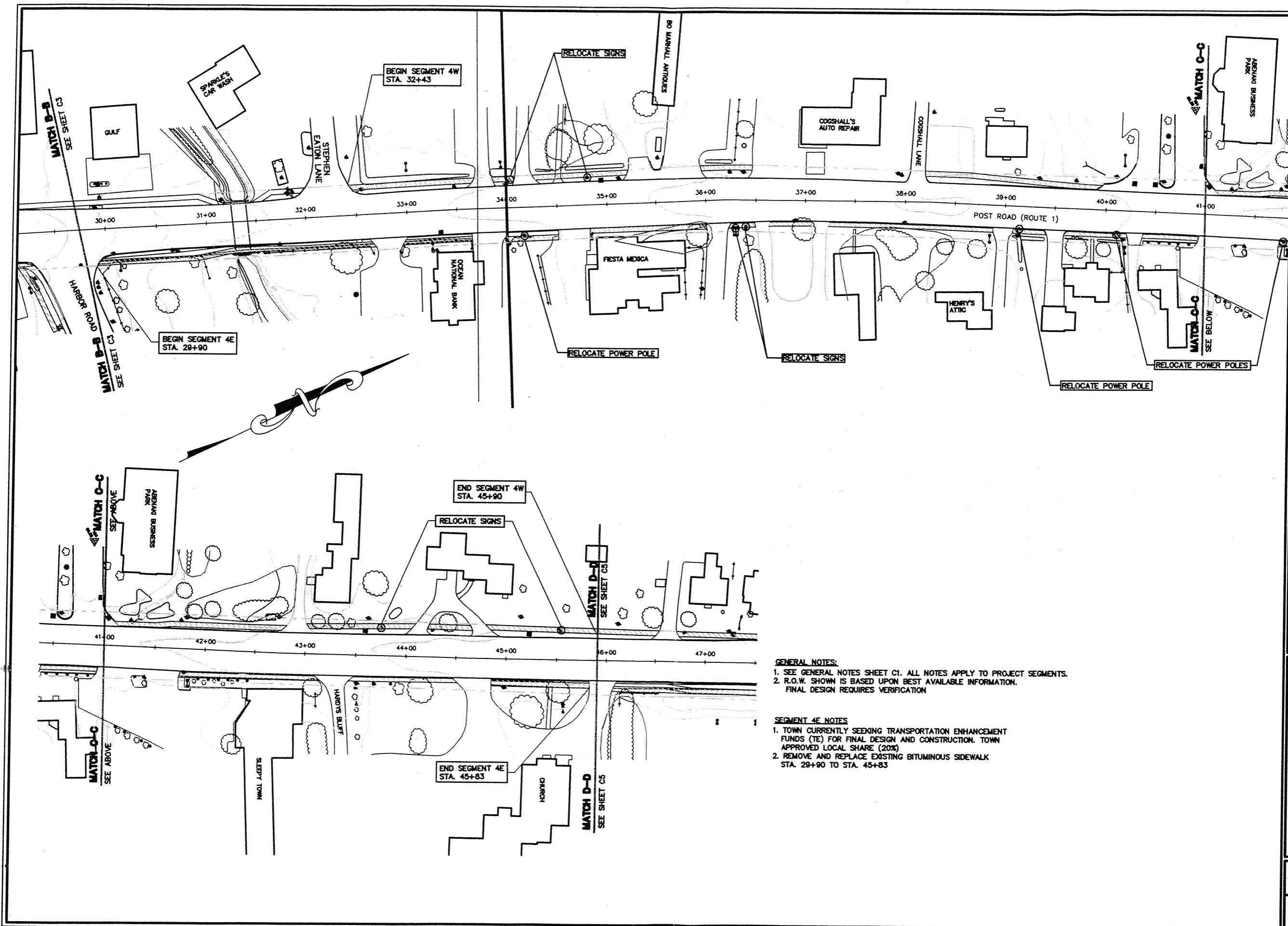
NO.	DATE	PERSON	DESIGNED:	CHECKED:	APPROVED:

CLD CONSULTING ENGINEERS
 316 US Rd.
 (207) 363-0669 • Fax: (207) 363-2384
 cld@cldeengineers.com • www.cldeengineers.com
 Maine • New Hampshire • Vermont

TOWN OF WELLS
 208 SANFORD ROAD
 WELLS, MAINE 04090

SIDEWALK DEVELOPMENT PLAN
 ROUTE 1 / ROUTE 109
 WELLS, ME
SIDEWALK LAYOUT PLAN
 SEGMENT 2+3

SCALE: 1"=40'	JOB NO. 01-0094
DATE: JAN 2003	DWG. 83



MATCH B-B
SEE SHEET C3

MATCH B-B
SEE SHEET C3

MATCH C-C
SEE ABOVE

MATCH C-C
SEE ABOVE

BEGIN SEGMENT 4E
STA. 29+90

BEGIN SEGMENT 4W
STA. 32+43

END SEGMENT 4W
STA. 45+90

END SEGMENT 4E
STA. 45+83

MATCH D-D
SEE SHEET C3

MATCH D-D
SEE SHEET C3

MATCH C-C
SEE BELOW

MATCH C-C

GENERAL NOTES:
 1. SEE GENERAL NOTES SHEET C1. ALL NOTES APPLY TO PROJECT SEGMENTS.
 2. R.O.W. SHOWN IS BASED UPON BEST AVAILABLE INFORMATION. FINAL DESIGN REQUIRES VERIFICATION.

SEGMENT 4E NOTES
 1. TOWN CURRENTLY SEEKING TRANSPORTATION ENHANCEMENT FUNDS (TE) FOR FINAL DESIGN AND CONSTRUCTION. TOWN APPROVED LOCAL SHARE (20%)
 2. REMOVE AND REPLACE EXISTING BITUMINOUS SIDEWALK STA. 29+90 TO STA. 45+83

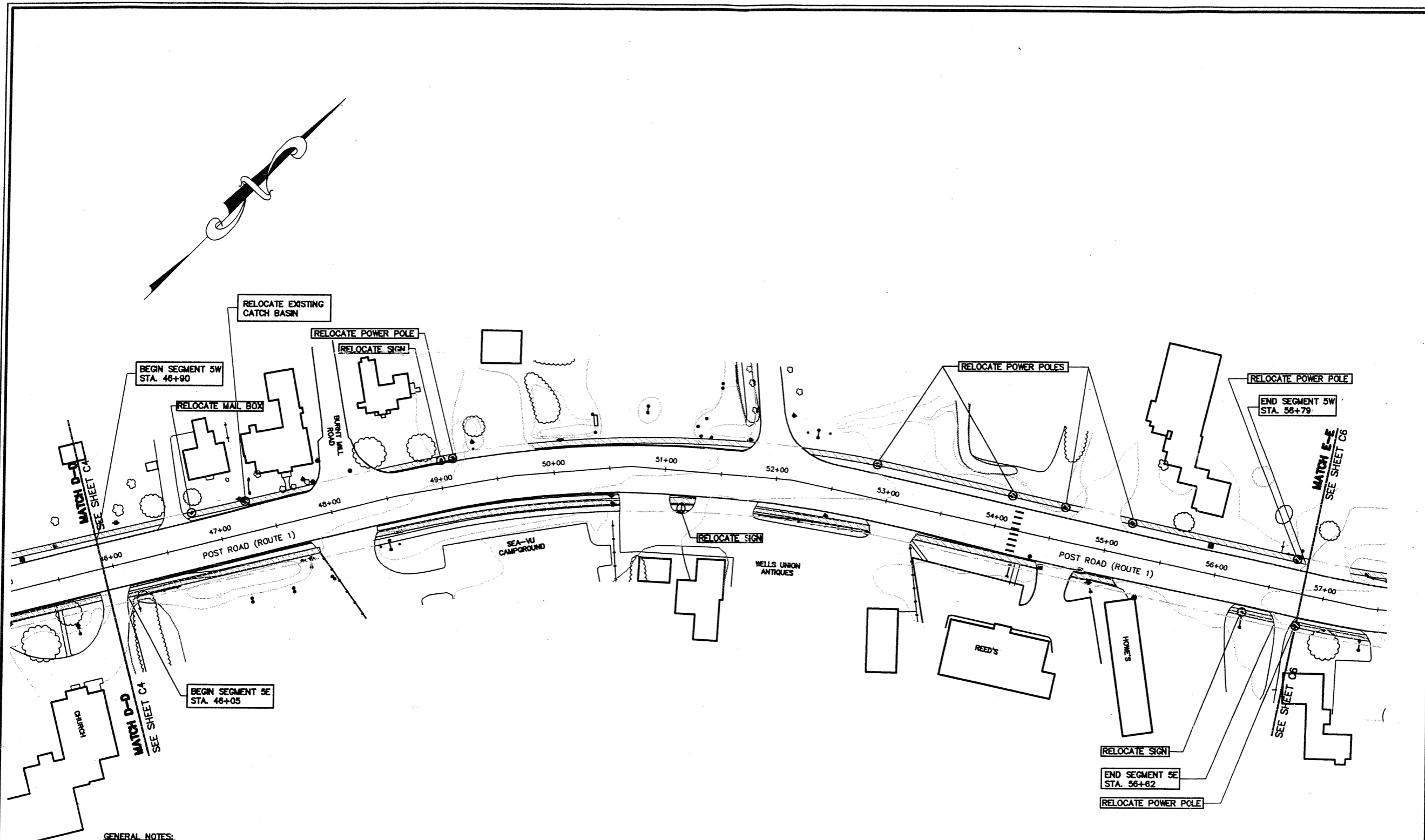
NO.	DATE	REVISION	DESIGNED:	APPROVED:

CEP
 CONSULTING ENGINEERS
 Inc.
 Park Place Corporate Center
 316 US Route 1
 (207) 363-6669 • Fax: (207) 363-3344
 cep@cedesigners.com • www.cedesigners.com
 Maine • New Hampshire • Vermont

CLIENT:
TOWN OF WELLS
 208 SANFORD ROAD
 WELLS, MAINE 04090

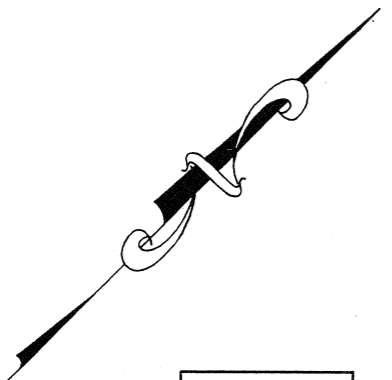
SIDEWALK DEVELOPMENT PLAN
 ROUTE 1 / ROUTE 108
 WELLS, ME
SIDEWALK LAYOUT PLAN
 SEGMENT 4

SCALE:	JOB NO.
1"=40'	04-0884
DATE:	DWG.
JAN.2003	C4



GENERAL NOTES:
 1. SEE GENERAL NOTES SHEET C1. ALL NOTES APPLY TO PROJECT SEGMENTS.
 2. R.O.W. SHOWN IS BASED UPON BEST AVAILABLE INFORMATION.
 FINAL DESIGN REQUIRES VERIFICATION

SEGMENT 5E NOTES
 1. REMOVE AND REPLACE EXISTING BITUMINOUS SIDEWALK FROM
 STA. 46+05 TO STA. 56+82



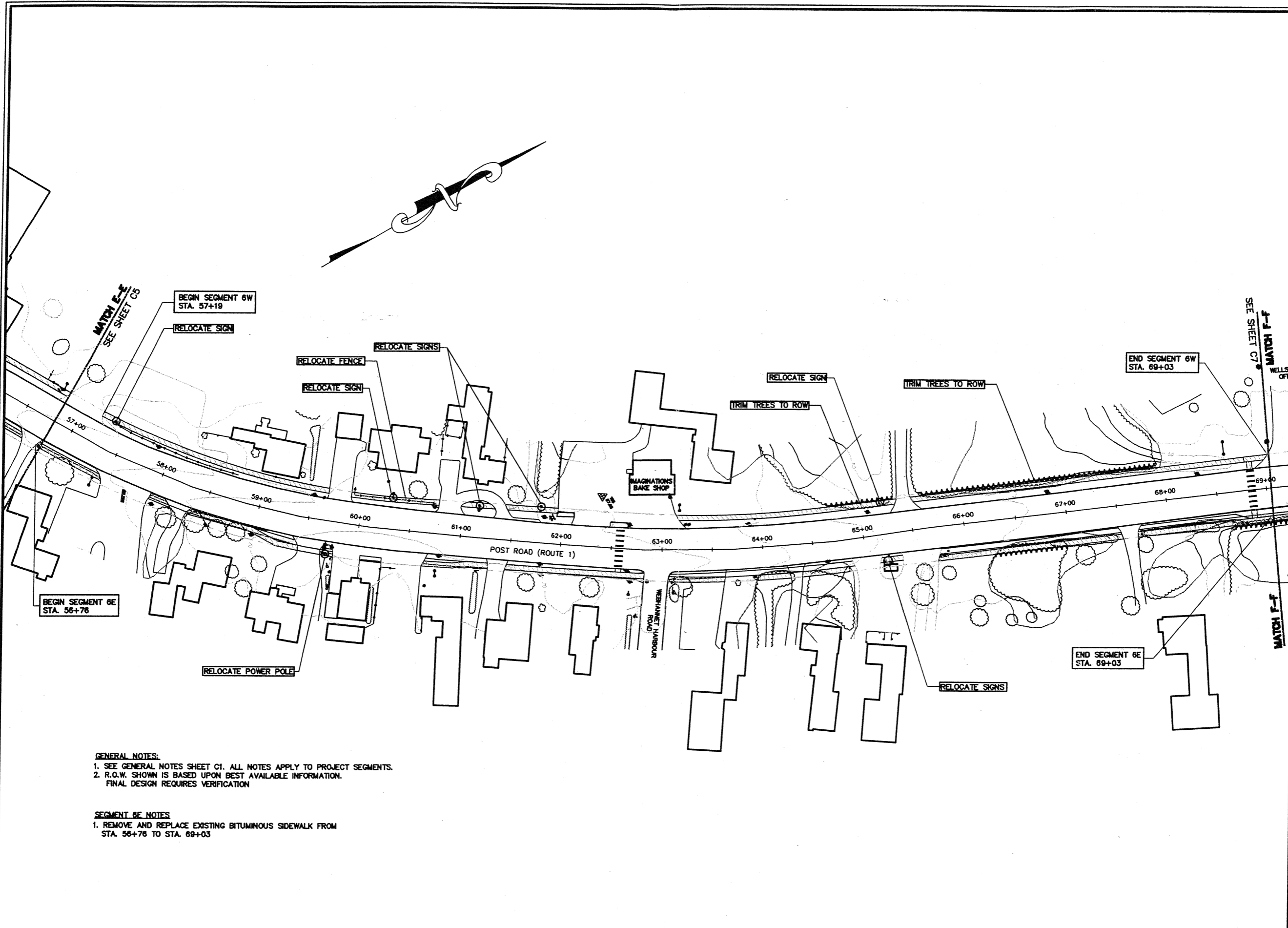
NO.	DATE	REVISION	CHECKED:	APPROVED:
	JAN 2003		JW	

CID CONSULTING ENGINEERS
 Inc.
 316 US Route 1, Suite D York, ME 03909
 (207) 363-0669 • Fax: (207) 363-2384
 cid@cidengineers.com • www.cidengineers.com
 Portland • New Hampshire • Vermont

TOWN OF WELLS
 208 SANFORD ROAD
 WELLS, MAINE 04090

SIDEWALK DEVELOPMENT PLAN
 ROUTE 1/ ROUTE 109
 WELLS, ME
SIDEWALK LAYOUT PLAN
 SEGMENT 5

SCALE: 1"=40'	JOB NO. 2-0034
DATE: JAN 2003	DWG. 5



GENERAL NOTES:
 1. SEE GENERAL NOTES SHEET C1. ALL NOTES APPLY TO PROJECT SEGMENTS.
 2. R.O.W. SHOWN IS BASED UPON BEST AVAILABLE INFORMATION.
 FINAL DESIGN REQUIRES VERIFICATION

SEGMENT 6E NOTES
 1. REMOVE AND REPLACE EXISTING BITUMINOUS SIDEWALK FROM
 STA. 58+78 TO STA. 69+03

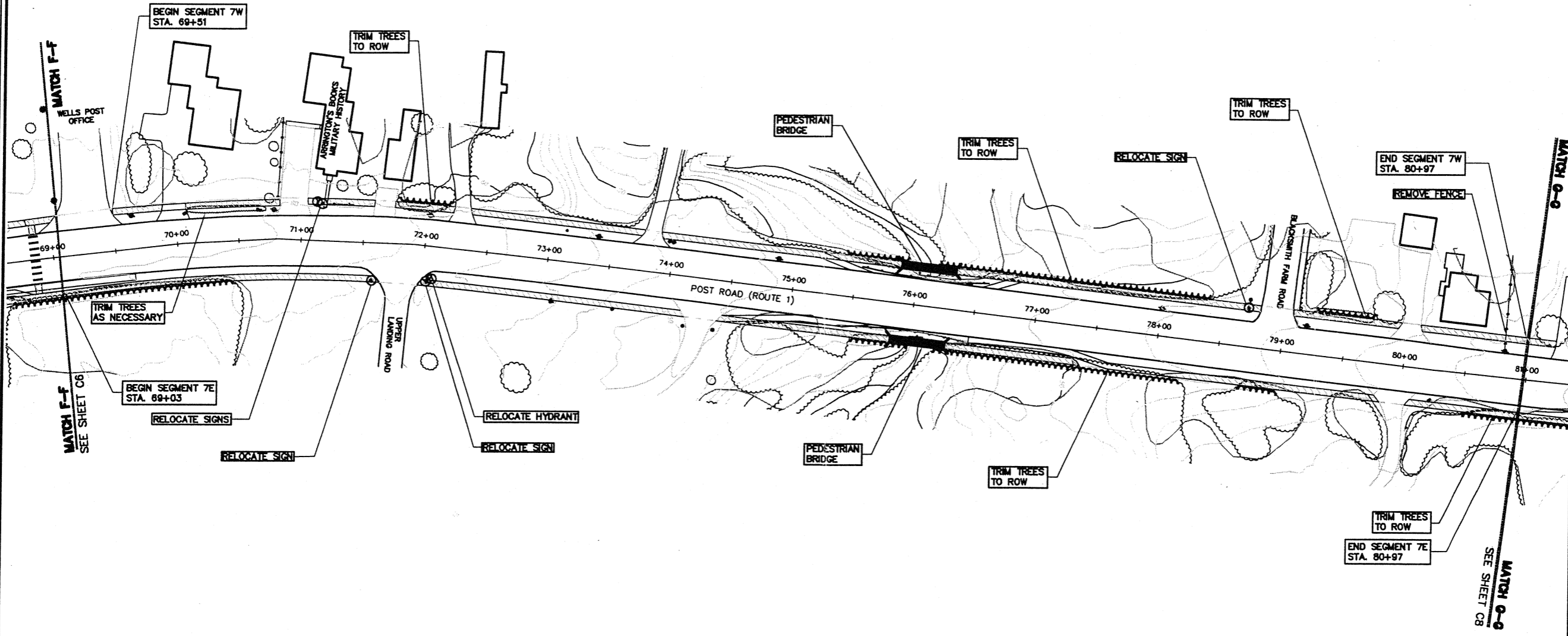
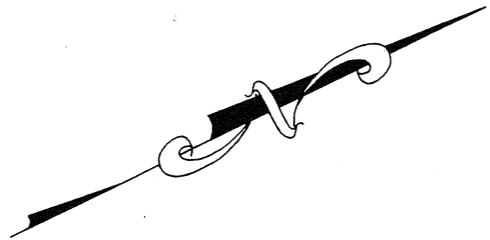
NO.	DATE	REVISION	DESIGNED:	CHECKED:	APPROVED:
			JRP/LGL	JAG	

CLD CONSULTING ENGINEERS
 Inc.
 316 US Route 1, Suite D, Wells, ME 04090
 (207) 363-0669 • Fax: (207) 363-2384
 cld@cldeengineers.com • www.cldeengineers.com
 Maine • New Hampshire • Vermont

TOWN OF WELLS
 208 SANFORD ROAD
 WELLS, MAINE 04090

SIDEWALK DEVELOPMENT PLAN
 ROUTE 1 / ROUTE 109
 WELLS, ME
SIDEWALK LAYOUT PLAN
SEGMENT 6

SCALE:	JOB NO.
1"=40'	01-0294
DATE:	DWG.
JAN 2003	86



GENERAL NOTES:
 1. SEE GENERAL NOTES SHEET C1. ALL NOTES APPLY TO PROJECT SEGMENTS.
 2. R.O.W. SHOWN IS BASED UPON BEST AVAILABLE INFORMATION.
 FINAL DESIGN REQUIRES VERIFICATION

SEGMENT 7E NOTES
 1. REMOVE AND REPLACE EXISTING BITUMINOUS SIDEWALK FROM STA. 69+03 TO STA. 69+25

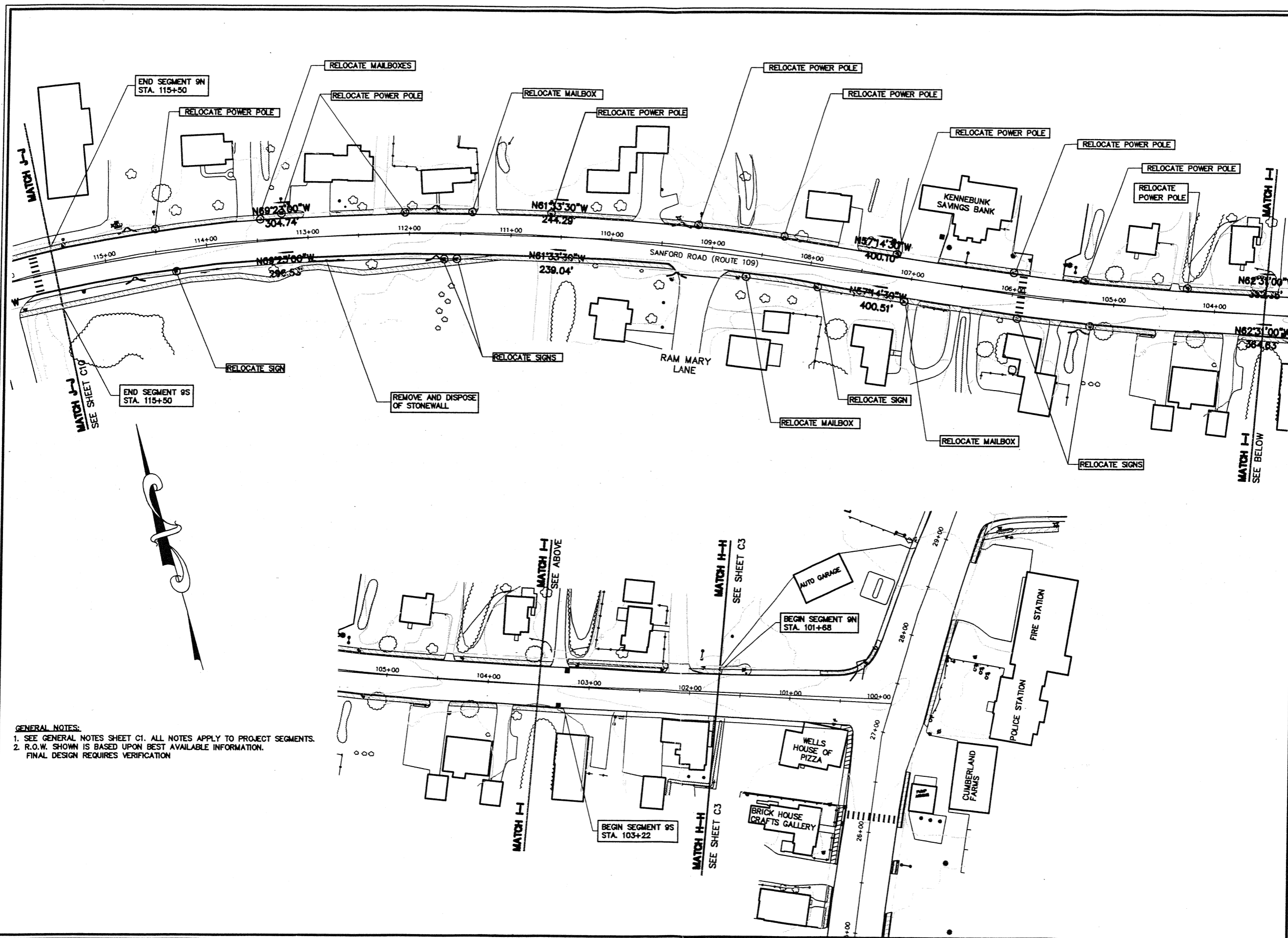
NO.	DATE	REVISION	CHECKED:	APPROVED:

CEP CONSULTING ENGINEERS
 Inc.
 Park Place Corporate Center
 316 US Route 1, Suite D, York, ME 03909
 (207) 363-0669 • Fax: (207) 363-2384
 cep@cedesigners.com • www.cedesigners.com
 Maine • New Hampshire • Vermont

TOWN OF WELLS
 208 SANFORD ROAD
 WELLS, MAINE 04080

SIDEWALK DEVELOPMENT PLAN
 ROUTE 1 / ROUTE 109
 WELLS, ME
SIDEWALK LAYOUT PLAN
SEGMENT 7

SCALE:	JOB NO.
1"=40'	07-0204
DATE:	DWG.
JAN 2003	07



GENERAL NOTES:
 1. SEE GENERAL NOTES SHEET C1. ALL NOTES APPLY TO PROJECT SEGMENTS.
 2. R.O.W. SHOWN IS BASED UPON BEST AVAILABLE INFORMATION. FINAL DESIGN REQUIRES VERIFICATION

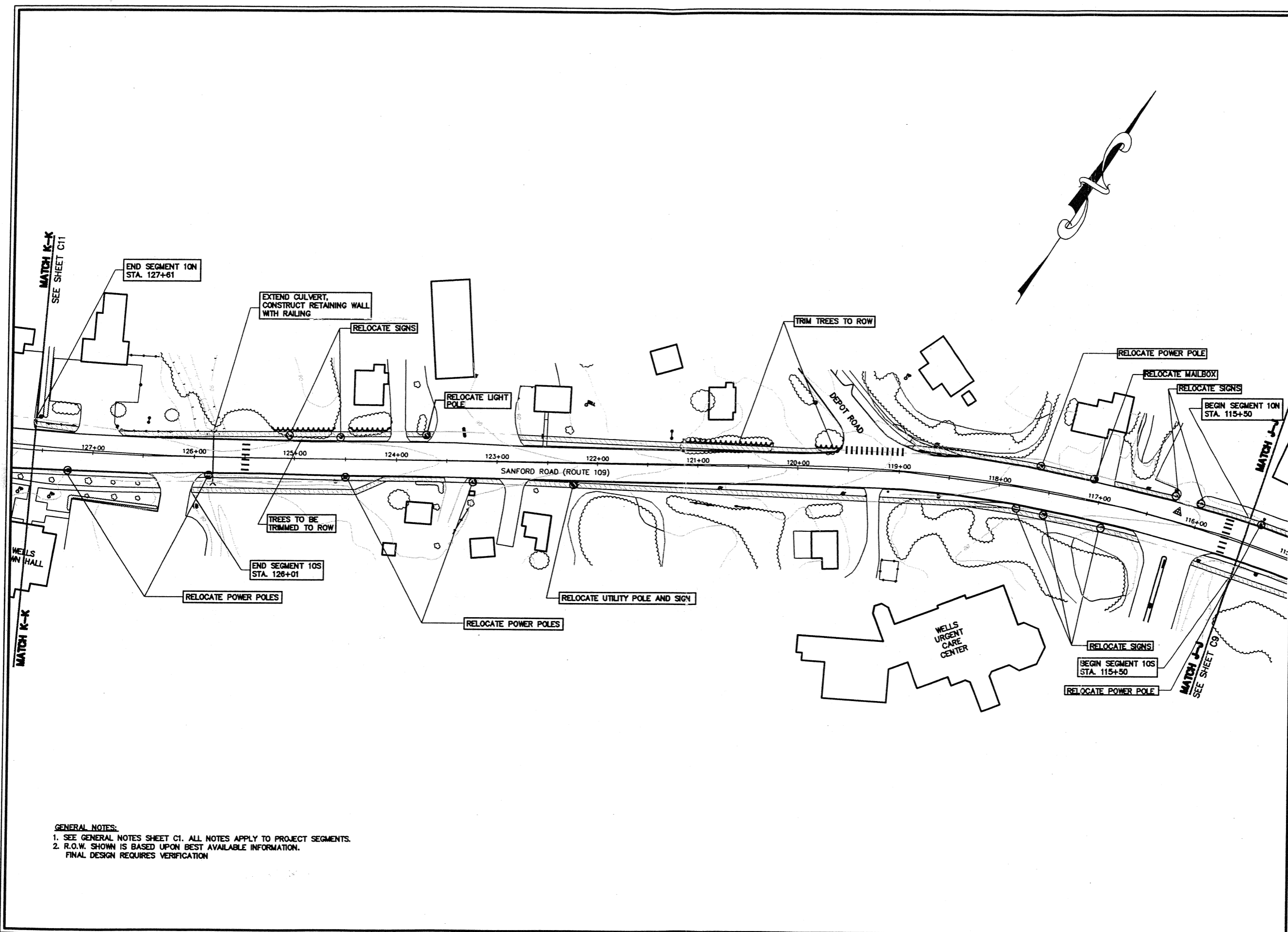
NO.	DATE	REVISION	DESIGNED:	CHECKED:	APPROVED:

CDI
 CONSULTING ENGINEERS
 316 US Route 1, Suite D York, ME 03909
 (207) 363-0669 • Fax: (207) 363-2384
 cdi@cdiengineers.com • www.cdiengineers.com
 Maine • New Hampshire • Vermont

TOWN OF WELLS
 208 SANFORD ROAD
 WELLS, MAINE 04090

SIDEWALK DEVELOPMENT PLAN
 ROUTE 1 / ROUTE 109
 WELLS, ME
SIDEWALK LAYOUT PLAN
SEGMENT 9

SCALE: 1"=40'	JOB NO. 09-0094
DATE: JAN 2003	DWG. 8



GENERAL NOTES:
 1. SEE GENERAL NOTES SHEET C1. ALL NOTES APPLY TO PROJECT SEGMENTS.
 2. R.O.W. SHOWN IS BASED UPON BEST AVAILABLE INFORMATION.
 FINAL DESIGN REQUIRES VERIFICATION

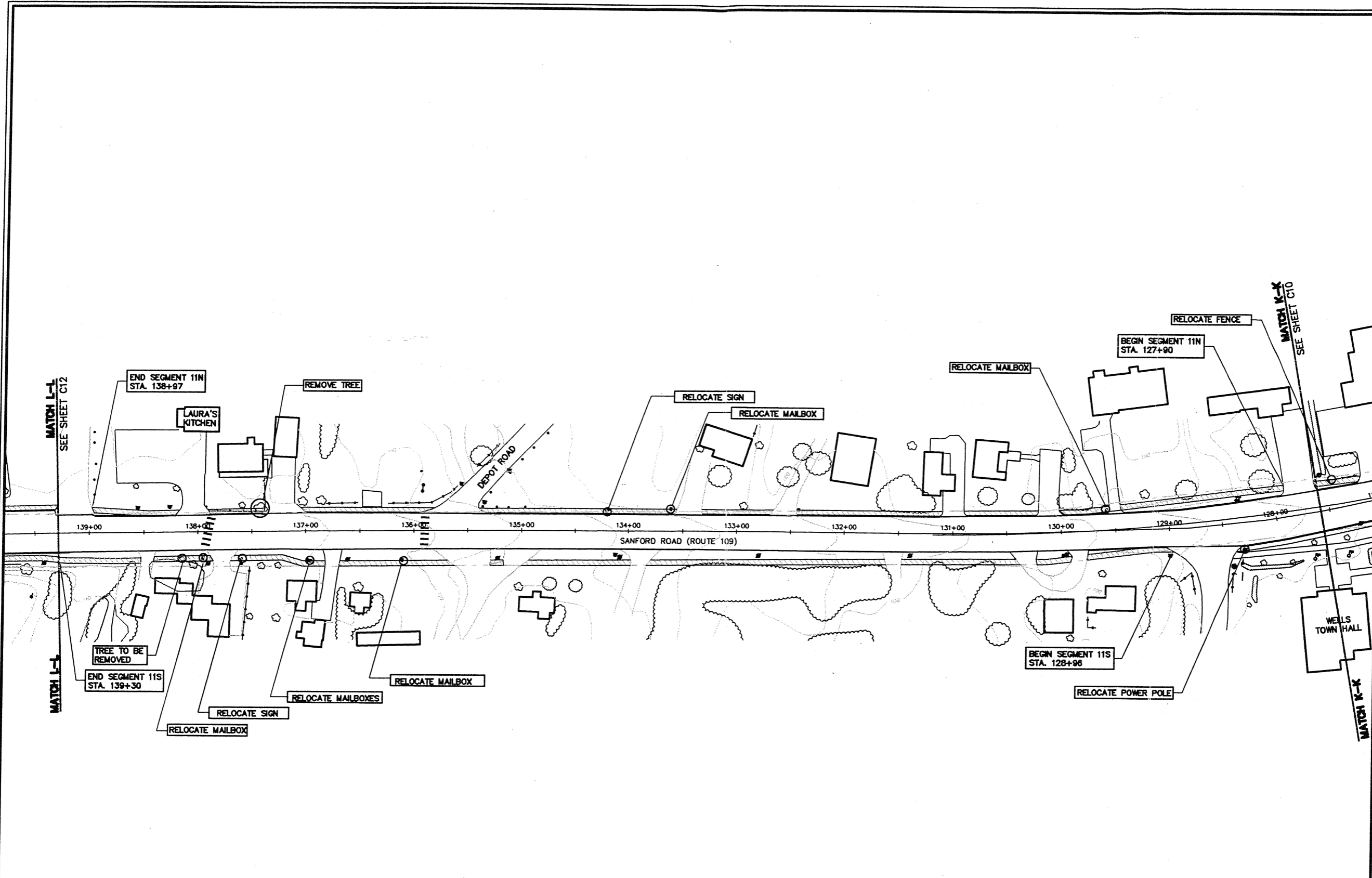
NO.	DATE	REVISION	DESIGNED:	CHECKED:	APPROVED:
			JRP/LGL	WAG	

CEP
 CONSULTING ENGINEERS
 Inc.
 Park Plaza Corporate Center
 316 US Route 1, Suite D, York, ME 03909
 (207) 363-0669 • Fax: (207) 363-2384
 cep@cedesigners.com • www.cedesigners.com
 Maine • New Hampshire • Vermont

TOWN OF WELLS
 208 SANFORD ROAD
 WELLS, MAINE 04080

SIDEWALK DEVELOPMENT PLAN
 ROUTE 1 / ROUTE 109
 WELLS, ME
SIDEWALK LAYOUT PLAN
 SEGMENT 10

SCALE: 1"=40'	JOB NO. 01-0004
DATE: JAN. 2003	DWG. C10



NO.	DATE	REVISION	DESIGNED:	CHECKED:	APPROVED:
			JME/AGL	JME	

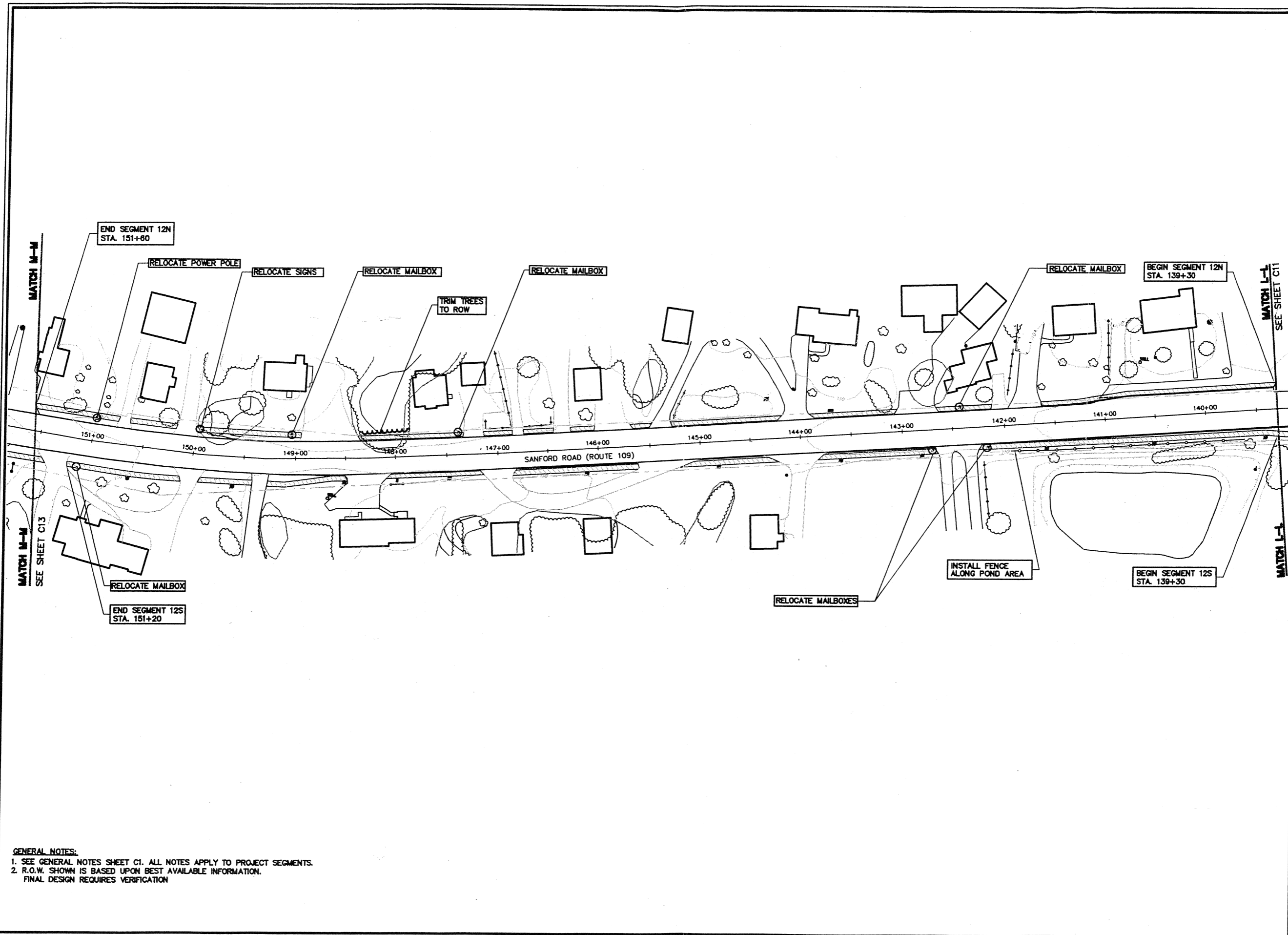
GLP CONSULTING ENGINEERS, Inc.
 316 US Route 1, Suite D - York, ME 03909
 (207) 363-0669 • Fax: (207) 363-2384
 glp@glpengineers.com • www.addingtoours.com
 Maine • New Hampshire • Vermont

TOWN OF WELLS
 208 SANFORD ROAD
 WELLS, MAINE 04090

SIDEWALK DEVELOPMENT PLAN
 ROUTE 1 / ROUTE 109
 WELLS, ME
SIDEWALK LAYOUT PLAN
 SEGMENT 11

SCALE: 1"=40'	JOB NO. 01-2004
DATE: JAN 2003	DWG. C11

GENERAL NOTES:
 1. SEE GENERAL NOTES SHEET C1. ALL NOTES APPLY TO PROJECT SEGMENTS.
 2. R.O.W. SHOWN IS BASED UPON BEST AVAILABLE INFORMATION.
 FINAL DESIGN REQUIRES VERIFICATION



GENERAL NOTES:
 1. SEE GENERAL NOTES SHEET C1. ALL NOTES APPLY TO PROJECT SEGMENTS.
 2. R.O.W. SHOWN IS BASED UPON BEST AVAILABLE INFORMATION.
 FINAL DESIGN REQUIRES VERIFICATION

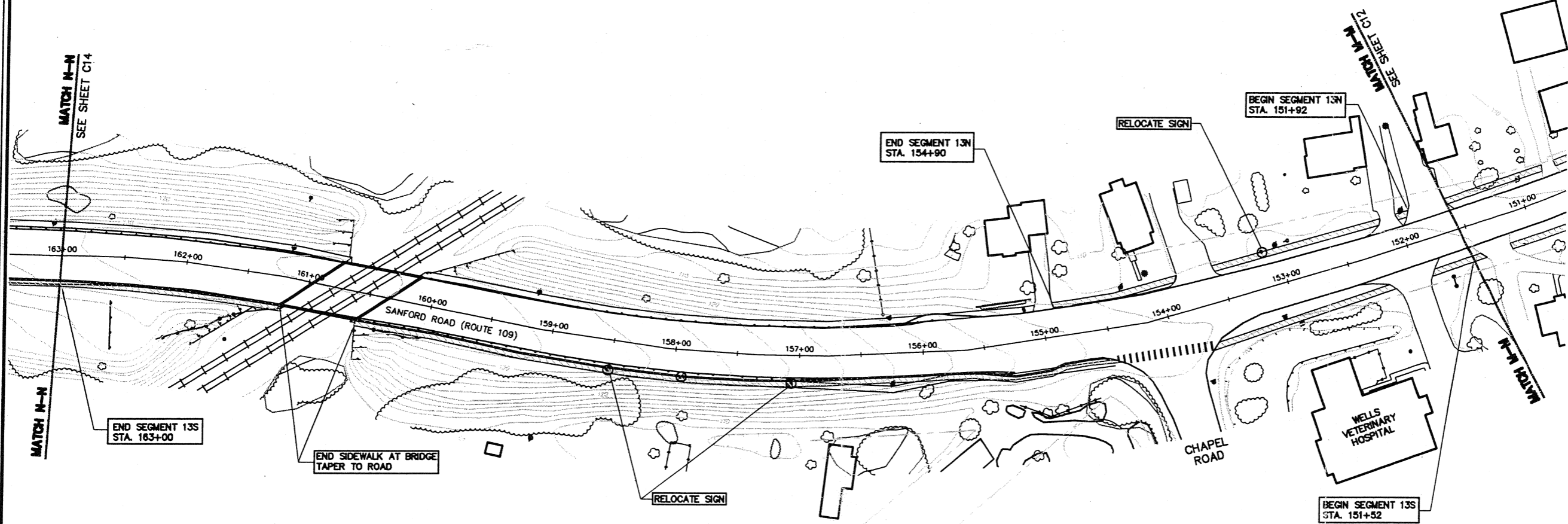
NO.	DATE	REVISION	CHECKED:	APPROVED:

CLD
 CONSULTING ENGINEERS
 Inc.
 316 U.S. Park
 Concord, N.H. 03309
 (603) 251-0669 • Fax: (603) 251-2884
 cld@clde.com • www.clde.com
 Maine • New Hampshire • Vermont

TOWN OF WELLS
 208 SANFORD ROAD
 WELLS, MAINE 04090

SIDEWALK DEVELOPMENT PLAN
 ROUTE 1 / ROUTE 109
 WELLS, ME
SIDEWALK LAYOUT PLAN
 SEGMENT T2

SCALE: 1"=40'	JOB NO. 01-0294
DATE: JAN 2003	DWG. C12

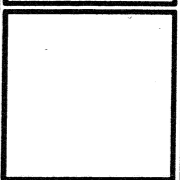


NOTE:
 1. SEE GENERAL NOTES SHEET C1. ALL NOTES APPLY TO PROJECT SEGMENTS.

GENERAL NOTES:
 1. SEE GENERAL NOTES SHEET C1. ALL NOTES APPLY TO PROJECT SEGMENTS.
 2. R.O.W. SHOWN IS BASED UPON BEST AVAILABLE INFORMATION.
 FINAL DESIGN REQUIRES VERIFICATION

NO.	DATE	REVISION	CHECKED:	APPROVED:
			JWG	
			JMP/DEL	

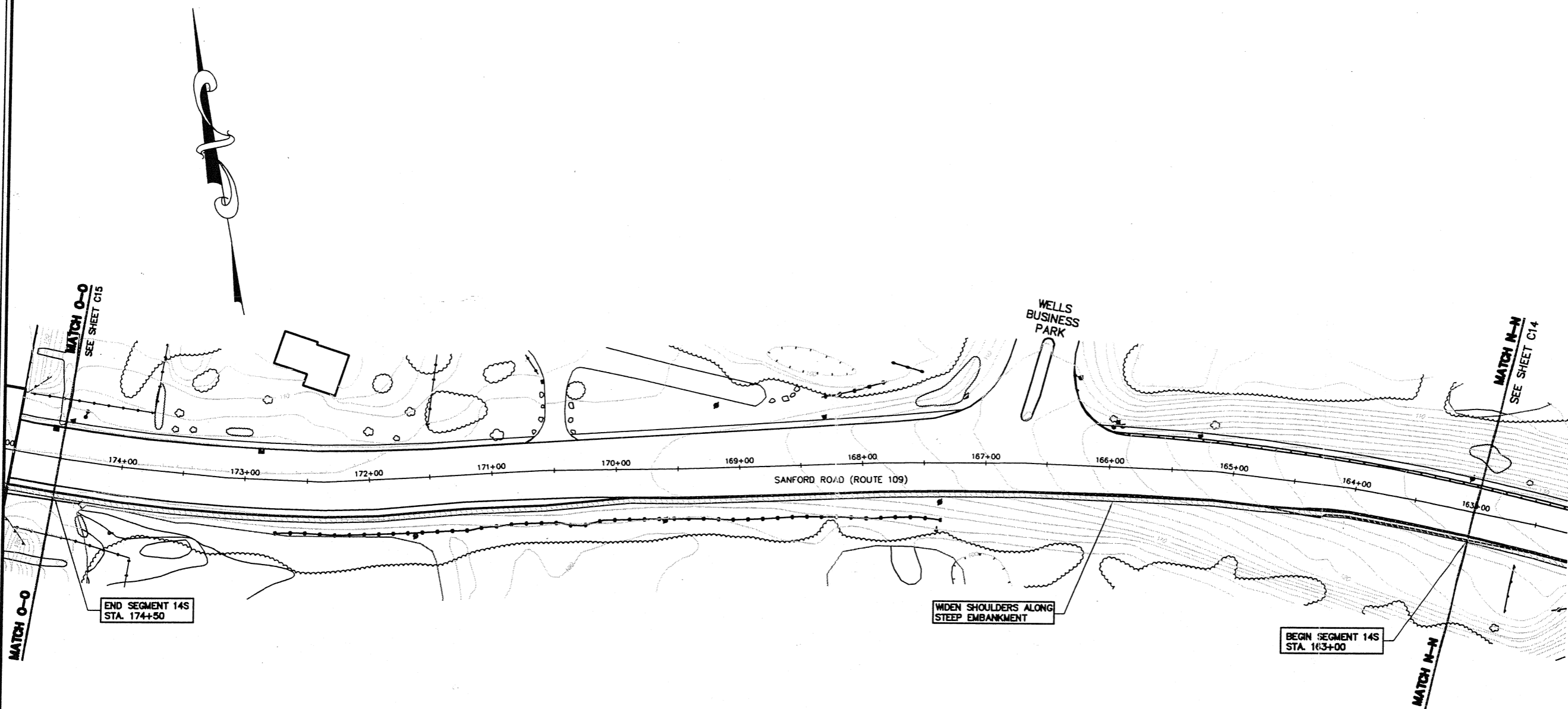
CEP
 CONSULTING ENGINEERS
 Inc.
 316 US Post Office Center
 Wells, ME 04090
 (207) 363-0669 • Fax: (207) 363-2384
 cep@cepengineers.com • www.cepengineers.com
 Maine • New Hampshire • Vermont



CLIENT:
TOWN OF WELLS
 208 SANFORD ROAD
 WELLS, MAINE 04090

SIDEWALK DEVELOPMENT PLAN
 ROUTE 1 / ROUTE 109
 WELLS, ME
SIDEWALK LAYOUT PLAN
SEGMENT 13

SCALE: 1"=40'	JOB NO. 01-0224
DATE: JUN 2003	DWG. C13



GENERAL NOTES:
 1. SEE GENERAL NOTES SHEET C1. ALL NOTES APPLY TO PROJECT SEGMENTS.
 2. R.O.W. SHOWN IS BASED UPON BEST AVAILABLE INFORMATION.
 FINAL DESIGN REQUIRES VERIFICATION

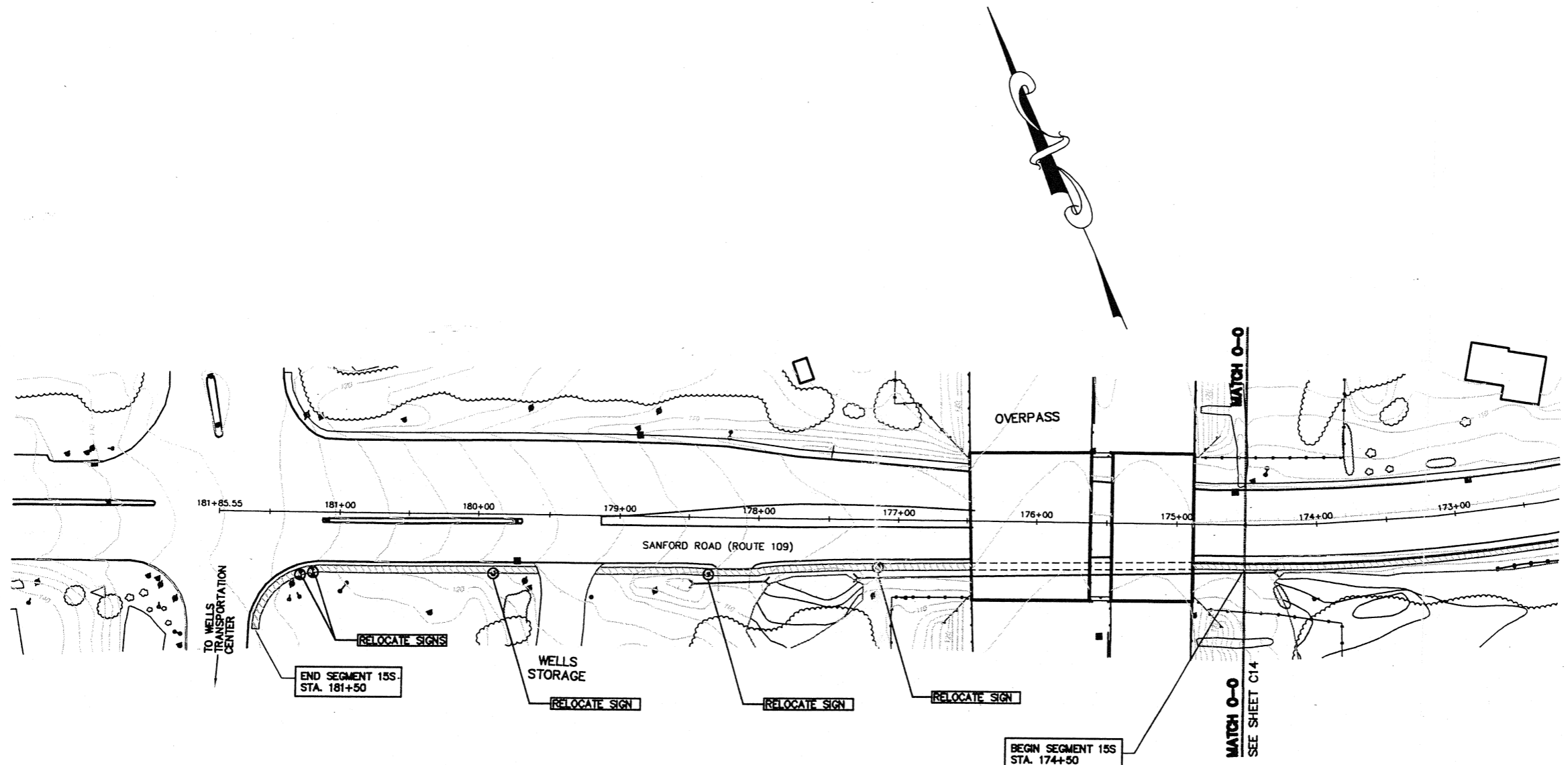
NO.	DATE	PERSON	CHECKED:	APPROVED:

CEP
 CONSULTING ENGINEERS
 Inc.
 Park Place Corporate Centre, 03099
 316 US Route 102, Wells, ME 04090
 (207) 363-0669 • Fax: (207) 363-2384
 cid@cedesigners.com • www.cedesigners.com
 Maine • New Hampshire • Vermont

TOWN OF WELLS
 208 SANFORD ROAD
 WELLS, MAINE 04090

SIDEWALK DEVELOPMENT PLAN
 ROUTE 1 / ROUTE 108
 WELLS, ME
SIDEWALK LAYOUT PLAN
 SEGMENT 14

SCALE:	JOB NO.
1"=40'	01-0004
DATE:	DWG.
JAN 2003	C14



GENERAL NOTES:
 1. SEE GENERAL NOTES SHEET C1. ALL NOTES APPLY TO PROJECT SEGMENTS.
 2. R.O.W. SHOWN IS BASED UPON BEST AVAILABLE INFORMATION.
 FINAL DESIGN REQUIRES VERIFICATION

NO.	DATE	REVISION	DESIGNED:	CHECKED:	APPROVED:
			JWG	JWG	
			JWG		

CEP
 CONSULTING ENGINEERS
 316 US Route 109, Wells, ME 04090
 (207) 361-0669 • Fax: (207) 361-2384
 cep@cedesigners.com • www.cedesigners.com
 Maine • New Hampshire • Vermont

TOWN OF WELLS
 208 SANFORD ROAD
 WELLS, MAINE 04090

SIDEWALK DEVELOPMENT PLAN
 ROUTE 1 / ROUTE 109
 WELLS, ME
SIDEWALK LAYOUT PLAN
 SEGMENT 15

SCALE:	JOB NO.
1"=40'	01-0204
DATE:	DWG.
JAN 2003	C15