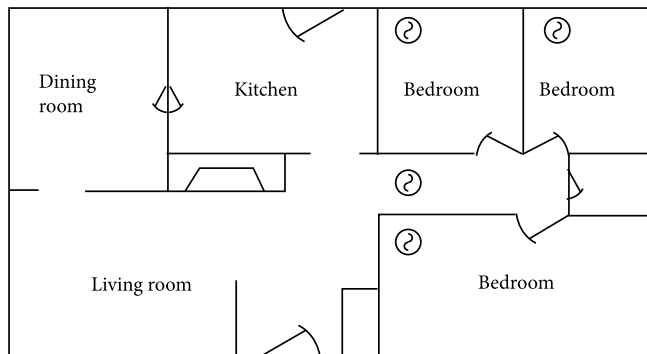
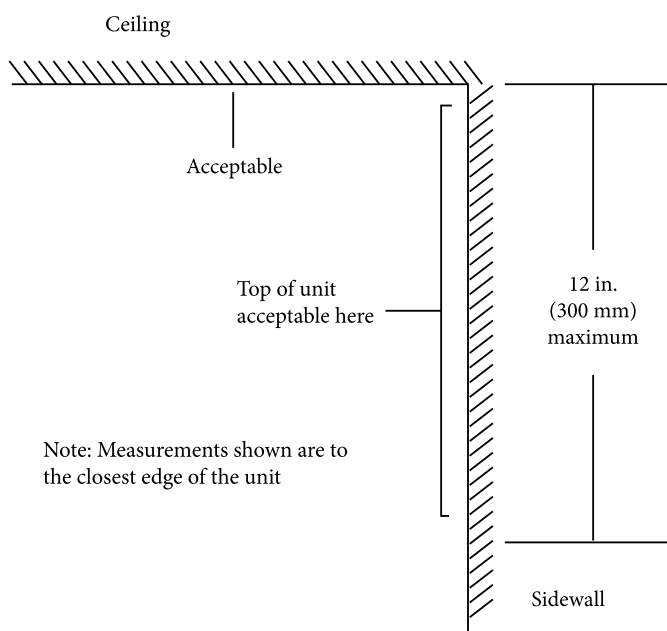


# Smoke Alarm Installation and Maintenance

## Alarm Placement

Smoke alarms should be installed according to NFPA 72 and the manufacturer's instructions. Heat and smoke rise, so smoke alarms should be installed on the ceiling or high on a wall to detect the first traces of smoke.

If a room has a pitched (slanted) ceiling, mount the unit near the ceiling's highest point, 4 to 12 inches (10 to 30.5 centimeters) away from the wall. If the room has an A-frame ceiling, mount the unit at least 4 to 12 inches (10 to 30.5 centimeters) away from the peak.



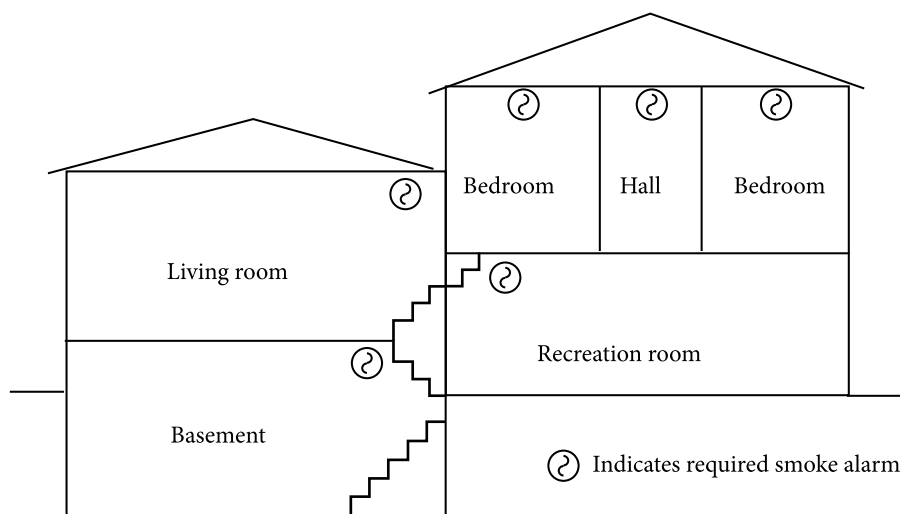
Wall-mounted smoke alarms should be installed so that the top of the alarm is not more than 12 inches (30.5 centimeters) from the ceiling.

Install basement smoke alarms close to the bottom of the stairs. Don't install an alarm at the top of basement stairs; dead air trapped near the closed door could prevent smoke from reaching the unit.

Some household environments can cause nuisance alarms or interfere with a smoke alarm's operation. Avoid placing alarms near a cooking appliance, a dusty area, a shower, or any area where the temperature drops below 40°F (4.5°C) or rises above 110°F (43°C).

Cooking fumes, steam, and automobile exhaust can result in nuisance alarms. Do not install alarms in bathrooms, kitchens, garages, attics, or unheated areas or near recessed ceiling areas, ceiling fans, furnaces, or furnace vents. Place alarms at least 3 feet (0.9 meter) horizontally from bathroom doors.

It's a good idea to have an experienced installer available, if possible, while your volunteers are in the field. Give volunteers a phone number to call your expert for advice on installation problems.



# Carbon Monoxide Safety



Often called the invisible killer, carbon monoxide is an invisible, odorless, colorless gas created when fuels (such as gasoline, wood, coal, natural gas, propane, oil, and methane) burn incompletely. In the home, heating and cooking equipment that burn fuel can be sources of carbon monoxide.

- CO alarms should be installed in a central location outside each sleeping area and on every level of the home and in other locations where required by applicable laws, codes or standards. For the best protection, interconnect all CO alarms throughout the home. When one sounds, they all sound.
- Follow the manufacturer's instructions for placement and mounting height.
- Choose a CO alarm that is listed by a qualified testing laboratory.
- Call your local fire department's non-emergency number to find out what number to call if the CO alarm sounds.
- Test CO alarms at least once a month; replace them according to the manufacturer's instructions.
- If the audible trouble signal sounds, check for low batteries. If the battery is low, replace it. If it still sounds, call the fire department.
- If the CO alarm sounds, immediately move to a fresh air location outdoors or by an open window or door. Make sure everyone inside the home is accounted for. Call for help from a fresh air location and stay there until emergency personnel declare that it is safe to re-enter the home.
- If you need to warm a vehicle, remove it from the garage immediately after starting it. Do not run a vehicle or other fueled engine or motor indoors, even if garage doors are open. Make sure the exhaust pipe of a running vehicle is not covered with snow.
- During and after a snowstorm, make sure vents for the dryer, furnace, stove, and fireplace are clear of snow build-up.
- A generator should be used in a well-ventilated location outdoors away from windows, doors and vent openings.
- Gas or charcoal grills can produce CO — only use outside.

## HOME HEATING EQUIPMENT



Have fuel-burning heating equipment and chimneys inspected by a professional every year before cold weather sets in. When using a fireplace, open the flue for adequate ventilation. Never use your oven to heat your home.

## FACTS

- ! A person can be poisoned by a small amount of CO over a longer period of time or by a large amount of CO over a shorter amount of time.
- ! In 2010, U.S. fire departments responded to an estimated 80,100 non-fire CO incidents in which carbon monoxide was found, or an average of nine calls per hour.



**NATIONAL FIRE PROTECTION ASSOCIATION**

The leading information and knowledge resource on fire, electrical and related hazards