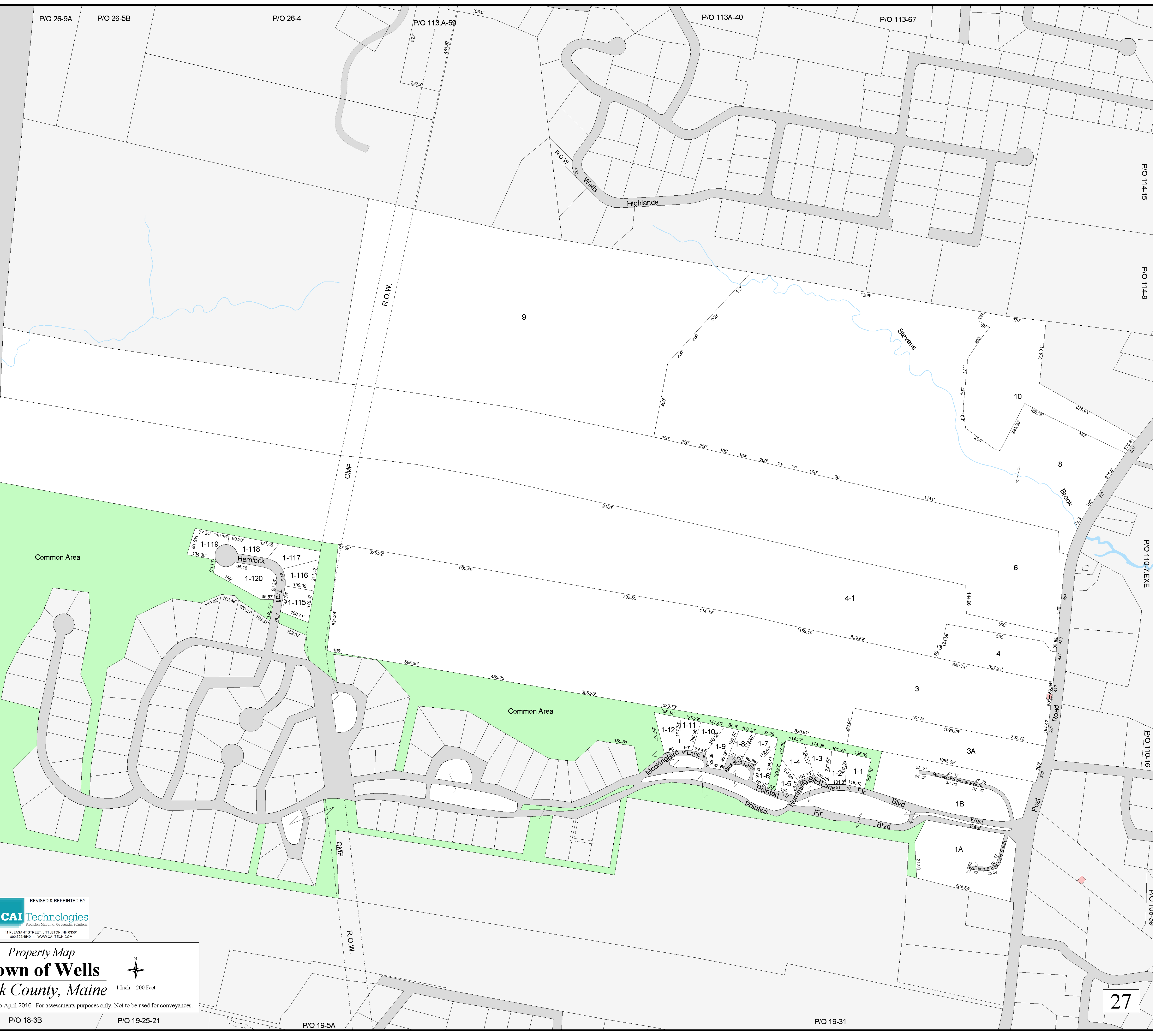


P/O 26-9A P/O 26-5B P/O 26-4 P/O 113A-59 P/O 113A-40 P/O 113-67

P/O 114-15  
P/O 114-8  
P/O 110-7-EXE  
P/O 110-16  
P/O 108-39

Maine Turnpike



P/O 19-31  
P/O 19-5A

REVISED & REPRINTED BY  
**CAI Technologies**  
 Precision Mapping. Geospatial Solutions.  
 11 PLEASANT STREET, LITTLETON, NH 03581  
 800.322.4540 - WWW.CAITECH.COM

*Property Map*  
**Town of Wells**  
 York County, Maine

1 Inch = 200 Feet

Revised to April 2016- For assessments purposes only. Not to be used for conveyances.

P/O 18-3B P/O 19-25-21 P/O 19-5A P/O 19-31