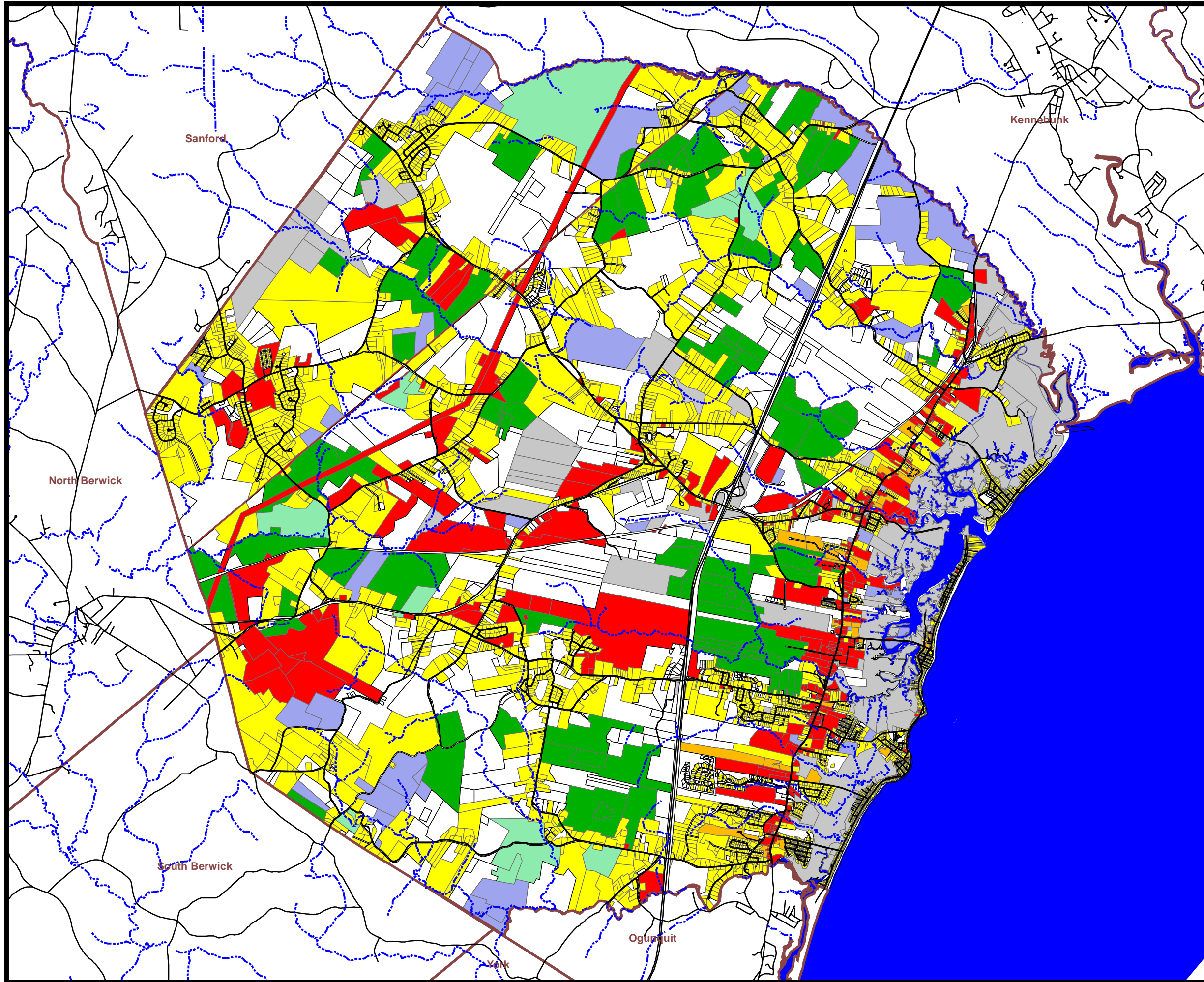


# Town of Wells Comprehensive Plan Map 2 Existing Land Use As of April 1, 2004



## Legend

### Land Use

- Vacant
- Single-Family Res
- Comm/Ind
- Condo Res
- Public
- Other Exempt
- Farm/Open
- Tree Growth
- Public Roads
- Streams
- York County Towns
- Coastline

Data provided by Town of Wells  
 Notes: Entire parcels are colored according to existing land use code on file with the Wells Tax Assessor, even if only a portion of the parcel is used for that purpose. Existing Land Use coding was obtained from the Assessing Database and has not been field-checked.  
 Printed 15 September 2004